

CUSTOMISED COLD ROOMS, WALK-IN COLD ROOM & FREEZER



Enclosure materials:

- Made of double side stainless steel double side embossed aluminum sheets and double side color steel sheets

Electric control system:

- With automatic intellectual electric control for functions of temperature setup, temperature control and auto defrost and various protections for overheat, overload, phase and high/low voltage.

Unit:

- With imported famous cooling compressor of high efficient, low energy consumption and stable performance, efficient heat exchange composed of female copper tube and aluminum pieces of extraordinary thermal exchange performance, and full closed or half closed compressor unit.

Schematic Drawing

- 1 A frame
- 2 A plank
- 3 Wall plank
- 4 Door
- 5 Cape plank
- 6 Bottom frame
- 7 Scale board

Cold Storage Room 25m³ Specifications



Item Name: Cold Storage Room

Storage Temperature : refrigerating : -5°C~5°C (adjustable)

Size(L*W*H): 4x3x2.5(m)

Floor space: 10 (m²)

Thickness of cold store panel: 100 (mm)

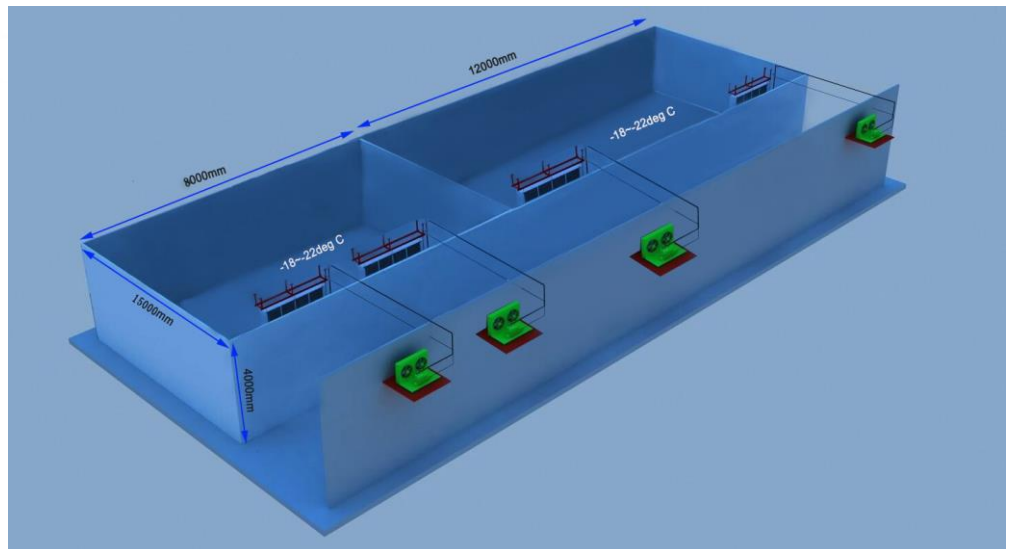
Volume: 25 (m³)

Main parts	description	unit	quantity
PU panels	Thickness:100mm,steel sandwich PU panel,interior SS sheet	m ²	70
Swing door	1800mm*800mm	set	1
compressor assembled (refrigerator)	Copeland XJQ04MBGY 4HP	set	1
draught fan	DD-60	set	1
refrigerant	R404a	kg	2.5
Electrical Controlling System	Micro computer auto control,defrosting	set	1
Air curtain	Model 900	set	1
Copper pipe		pcs	1
Cooling power	6T	pcs	1
Pallet racking		set	1
Cold storage accessory	Whole set	set	1
Refrigerating accessory	Whole set	set	1
Hardware fitting	Whole set	set	1

CAVOSPACE



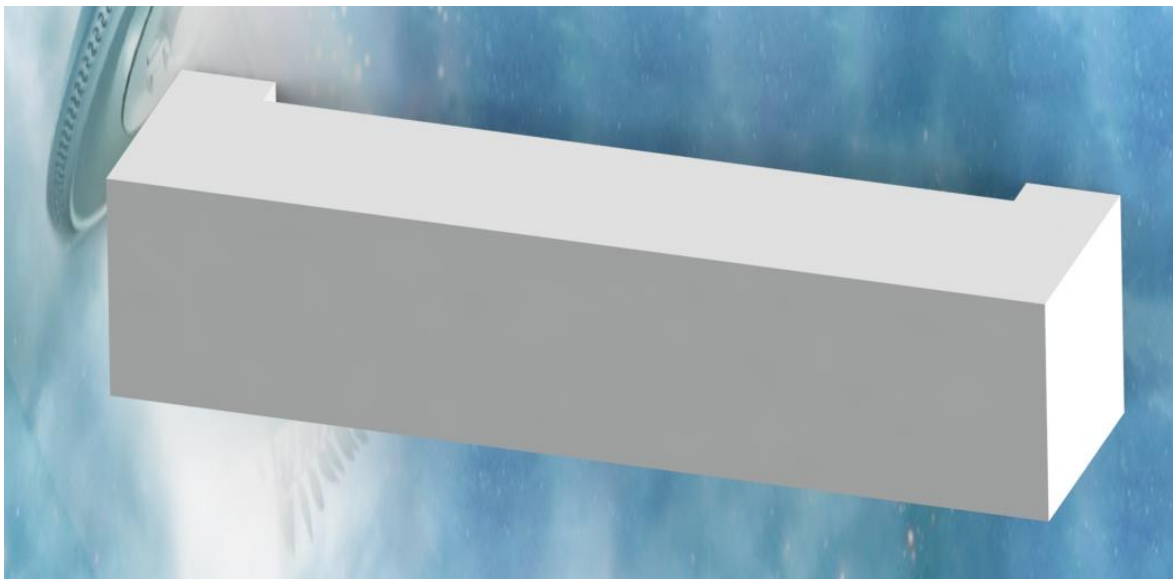
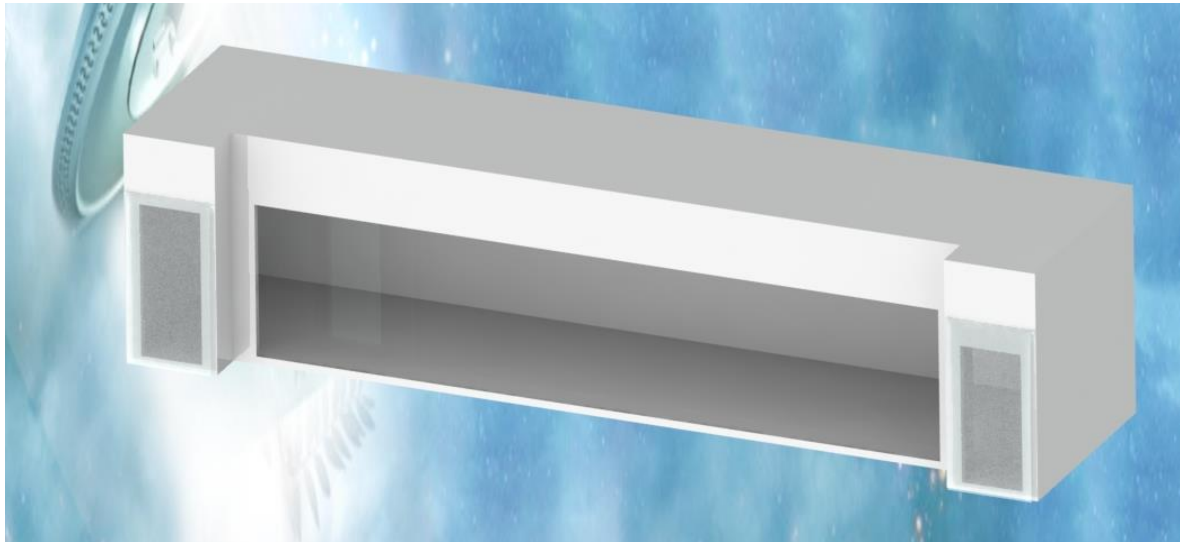
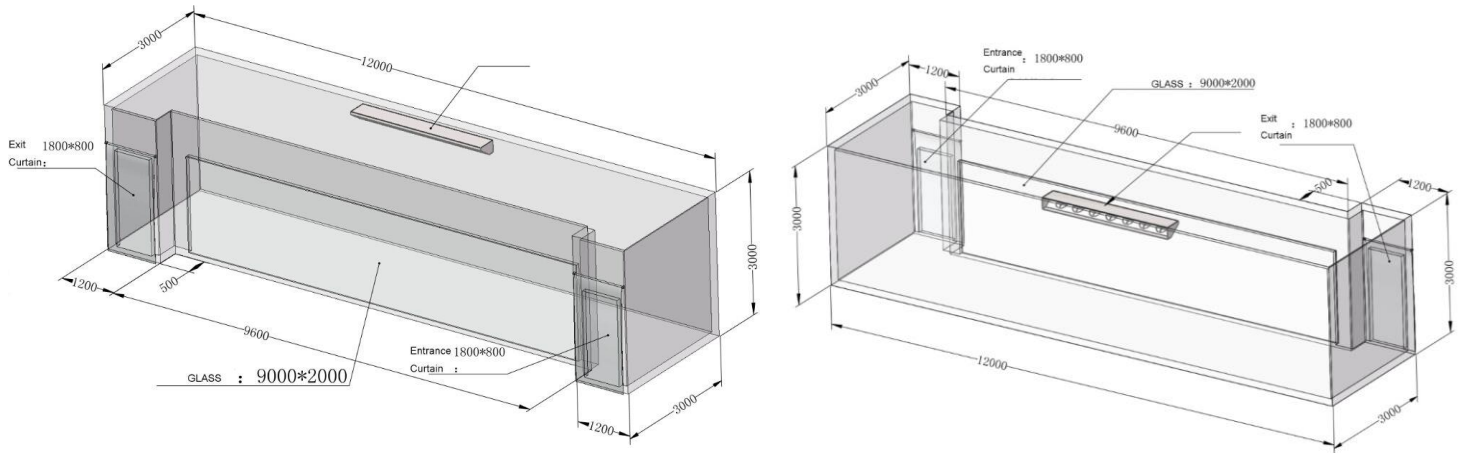
Cold Room



CAVOSPACE



Design, drawing & illustration



Inner View



Plates



Cooling System



Display Cold Room



Door quantity	one door	two doors	three doors	four doors	five doors	six doors	seven doors	eight doors	nine doors	ten doors
Display cold room dimension(mm)	887*950* (≥1955H)	1645*950* (≥1955H)	2403*950* (≥1955H)	3161*950* (≥1955H)	3919*950* (≥1955H)	4677*950* (≥1955H)	5435*950* (≥1955H)	6193*950* (≥1955H)	6951*950* (≥1955H)	7709*950* (≥1955H)
Cold room door height (mm)	1855H									
Panels Thickness	50mm									
Inner temperature	60°C ~ 0°C									



Door quantity	one door	two doors	three doors	four doors	five doors	six doors	seven doors	eight doors	nine doors	ten doors
Display cold room dimension(mm)	937*950* (≥2005H)	1695*950* (≥2005H)	2453*950* (≥2005H)	3211*950* (≥2005H)	3969*950* (≥2055H)	4727*950* (≥2005H)	5485*950* (≥2005H)	6243*950* (≥2005H)	7001*950* (≥2005H)	7759*950* (≥2005H)
Cold room door height (mm)	1855H									
Panels Thickness	70mm									
Inner temperature	0°C ~ -15°C									

Megareve International Limited

Unit 508, 5th Floor, Block D, Victorious Factory Building, 33A-37A Tseuk Luk Street, San Po Kong, Kowloon, Hong Kong

Tel: (852) 2555 1284 ~ Fax: (852) 2554 6749 ~ Email: megareve@megareve.com

Cold & Freezer Room



1. customized size and temperature
2. both sides painted galvanized steel polyurethane panel
3. hinge door

1. Product Information

Dimension	Length (m) *Width (m)*Height (m)
Panel	polyurethane insulation panel, 43kg/m ³ , fire retardant
Foaming material	BASF
Panel thickness	50mm, 75mm, 100mm, 150mm, 200mm
Steel cover	stucco embossed aluminum, painted galvanized steel, stainless steel, PVC steel
Panel connection	cam lock type, use hexagonal key to assemble and disassemble
Type of door	hinge door, convex door, sliding door
Temp. of room	-45~+20 degree, optional
Purpose of cold room	fruit, vegetable, lower, fresh/frozen meat etc
Refrigeration unit	Copeland / Bitzer / Sanyo etc
Refrigeration type	air cooled / water cooled
Fittings	all necessary fittings are included, optional
Place to assemble	indoor/out door (concrete construction building/steel construction building)
Voltage	220V/50HZ, 220V/60HZ, 380V/50HZ optional

Megareve International Limited

Unit 508, 5th Floor, Block D, Victorious Factory Building, 33A-37A Tseuk Luk Street, San Po Kong, Kowloon, Hong Kong
 Tel: (852) 2555 1284 ~ Fax: (852) 2554 6749 ~ Email: megareve@megareve.com

2. Design / Structure / Details:



3. Advantage

1. Use BASF polyurethane foam material.
2. Polyurethane foam density is up to 43 kgs / m3 or above.
3. The maximum length of panels is 12 Meters.
4. Polyurethane foam is with flame retardant.
5. The connection of our cold room panels are made with PE sealing rubber which is with high quality sealing.
6. The connection of our cold room is with cam lock construction and exocentric fasteners for tight connection and sealing of the cold room.
7. Built in lights, switch and other necessary fittings.

4. Specification

EXTERIOR DIMENSION (W*L*H)	INTERIOR DIMENSION (W*L*H)	TEMPERATURE	POWER
2366*2366*2300	2166*2166*2100	≥-5 to -20	220V/50HZ
2366*3549*2300	2166*3349*2100	≥-5 to -20	380V/50HZ 3P
2366*4732*2300	2166*4532*2100	≥-5 to -20	380V/50HZ 3P
3549*3549*2300	3349*3349*2100	≥-5 to -20	380V/50HZ 3P
2366*5915*2300	2166*5715*2100	≥-5 to -20	380V/50HZ 3P
3549*4732*2300	3349*4532*2100	≥-5 to -20	380V/50HZ 3P
3549*5919*2300	3349*5715*2100	≥-5 to -20	380V/50HZ 3P
4732*4732*2300	4532*4532*2100	≥-5 to -20	380V/50HZ 3P
4732*5915*2300	4532*5715*2100	≥-5 to -20	380V/50HZ 3P
5915*5915*2300	5715*5715*2100	≥-5 to -20	380V/50HZ 3P

Megareve International Limited

Unit 508, 5th Floor, Block D, Victorious Factory Building, 33A-37A Tseuk Luk Street, San Po Kong, Kowloon, Hong Kong
 Tel: (852) 2555 1284 ~ Fax: (852) 2554 6749 ~ Email: megareve@megareve.com

Modular Polyurethane Panel

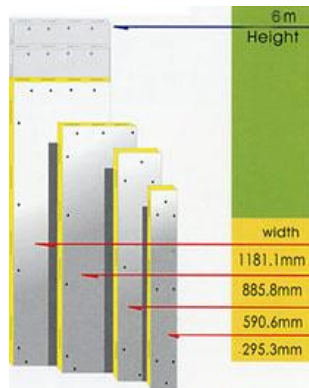
Modular Polyurethane insulated panel for cold storage are made of modular fabrication with polyurethane insulation with different dimensions, which make it flexible for construction different sizes of an ideal cold storage room. The modular design allows for easy assembly and disassembly. All panels are injected with 100% polyurethane with an average density of 40KG/M3 firmly glued to the metal, which has a variety of finishes available to meet the customers' requirement.

POLYURETHANE SPECIFICATION

Thermal Conductivity at 0°C	0.018	K/Cal
Average Density	40~50	Kg/m3
Resistance to Compression	1.6	Kg/cm2

Panels Dimension

Polyurethane sandwiched panels are of 100% Polyurethane insulation, which is constructed by being foamed in place with retarded Polyurethane using high pressure. They have certain dimensions. Standard widths of panels are a multiple of 295.3mm. The maximum lengths of panels are 6M. Non-standard sizes are also available upon request with price varying.



Panels Thickness

panel THK.(mm)	Operating Temp.
50	5°C (Or above)
75	-5°C (Or above)
100	-25°C (Or above)
150	-45°C (Or above)

Installation of panels:

Every panels consists of tongue and groove construction and can be tightened by a number of exocentric fasteners, which may be unscrewed easily with a hexagonal key.



CHOICE OF METAL FINISH

- A. Stucco Embossed Aluminium
- B. Stainless Steel
- C. Painted Galvanized Mild Steel
- D. Standard floor panels:
1.5mm gaivanized mild steel

